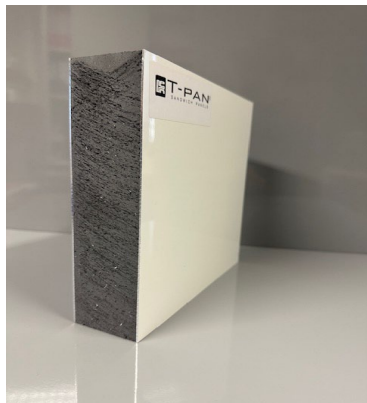


TECHNICAL SHEET: SANDWICH PANEL TYPE ALU-STY



Sandwich panel with prepainted aluminium skins colour white (simil to RAL9010) with protection film.
Core: extruded polystyrene foam XENERGY RTM Plus.

FEATURES

TOTAL THICKNESS	from 22mm up 102mm
MAX DIMENSIONS	14x2,48 metres
SKINS	Prepainted aluminium skins, colour white, with protection film, thickness 1mm
CORE FOAM	extruded polystyrene density 40Kg/m ³
BONDING	two-components polyurethanic glue
EXERCISE TEMPERATURE	from -30 c° up +70 c°
TOLERANCES	thickness +0/-1mm lenght-width +/-2mm

THEORETICAL WEIGHT EXAMPLES

TH. 22MM	with aluminium skins th. 1mm and extruded polystyrene th.20mm, density 40 Kg/m ³	Weight= 7,2 Kg/m²
TH. 32MM	with aluminium skins th. 1mm and extruded polystyrene th.30mm, density 40 Kg/m ³	Weight= 7,6 Kg/m²
TH. 42MM	with aluminium skins th. 1mm and extruded polystyrene th.40mm, density 40 Kg/m ³	Weight= 8,0 Kg/m²

Note: The above data refer to values deduced from our reference production and are subject to variations due to the tolerances of the raw materials used. T-pan s.r.l. will not take the responsibility for applications not suitable for the correct use of our products.